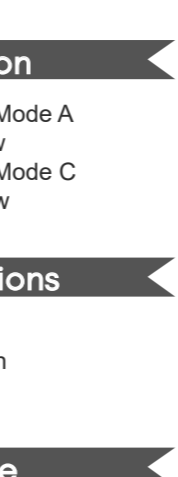


User Guide

Wallbox



CATALOG

Product Introduction

- 01. Relative Accessories of Mode A
 - Mode A Station Overview
- 02. Relative Accessories of Mode C
 - Mode C Station Overview

Parameters & Cautions

- 03. Technical Parameters
- 04. General Charging Sketch

Instructions for Use

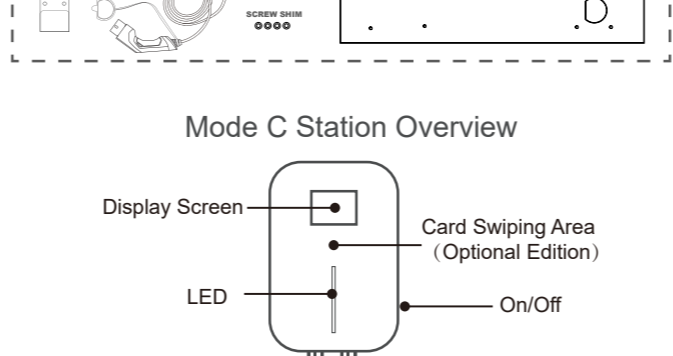
- 05. Instruction for Use
- 06. Illustration of Screen

Caution & Security

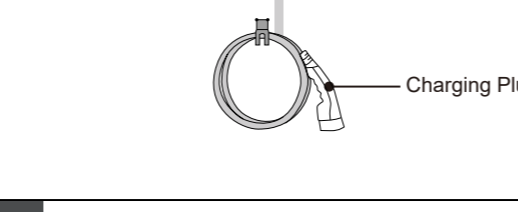
- 07. Caution of Using
 - About Maintaining
- 08. Security Warning
- 09. Overhaul

01 Wallbox Overview

Relative Accessories of Mode A

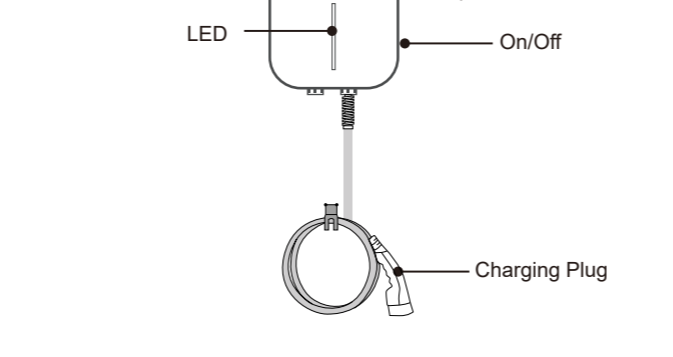


Mode A Station Overview

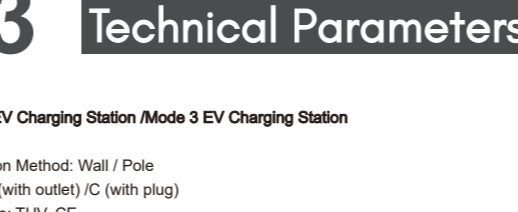


02 Wallbox Overview

Relative Accessories of Mode C



Mode C Station Overview



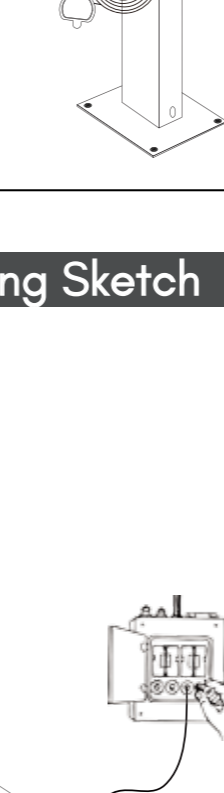
03 Technical Parameters

Level 2 EV Charging Station Mode 3 EV Charging Station

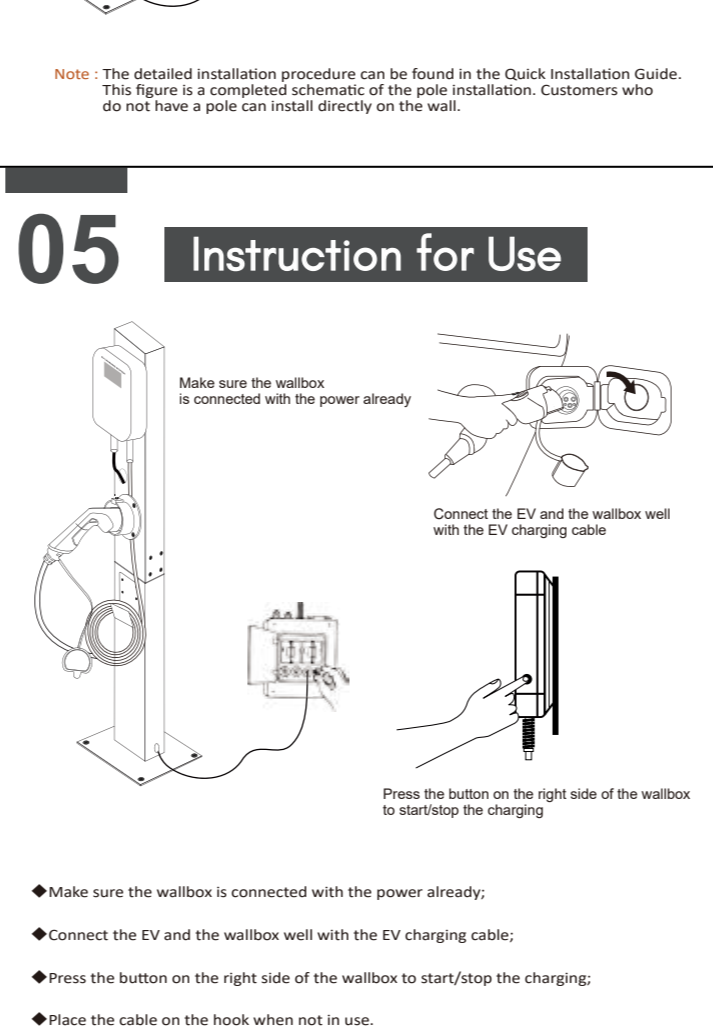
Installation Method: Wall / Pole
 Mode: A (with socket/C with plug)
 Certificate: TUV, CE
 IP Degree: IP54
 Rated Voltage: 220VAC
 Rated Current: 16A/32A
 Rated Power:
 Single Phase Mode: 3.6kW, 7.2kW
 Three Phase Mode: 11kW, 22kW
 Operating Temperature: -40°C to +40°C
 Box Size: 210mm*150mm*70mm
 Box Weight: 7kg
 Enclosure Material: ABS+PC alloy
 Starting Mode: Button (default)
 Current Adjustable: Optional
 APP function: Optional

Other Options:
 Starting Mode: RFID card, Key, APP
 APP Mode: Bluetooth, WiFi

Security Protection:
 Warning and display functions
 Open circuit protection
 Output overcurrent protection
 Input under voltage protection
 Over temperature protection
 Ground protection
 Inrush overvoltage protection
 Charge status detection

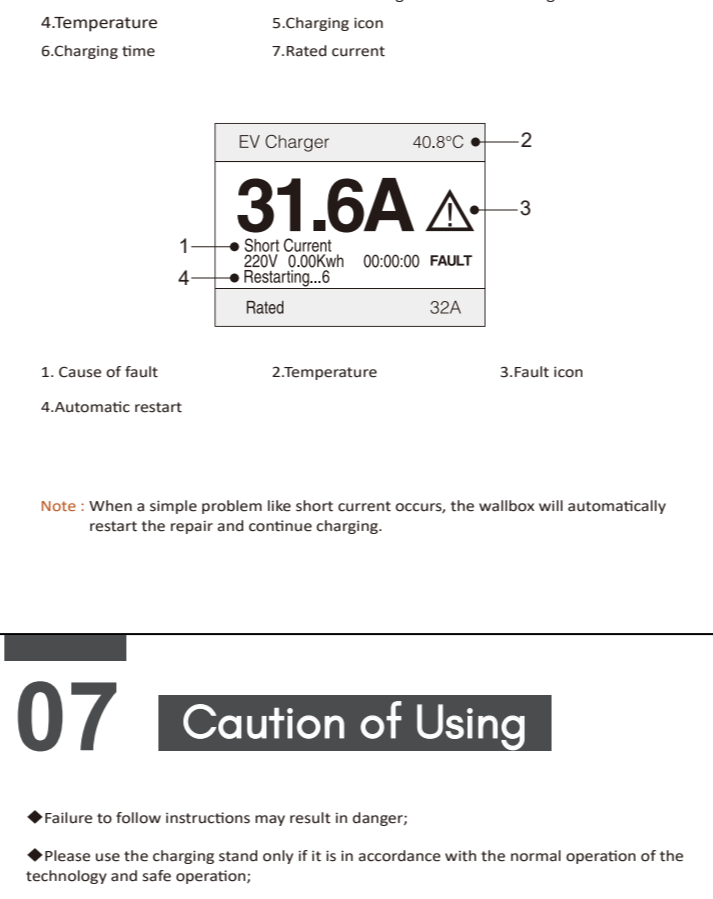


04 General Charging Sketch



Note: The detailed installation procedure can be found in the Quick Installation Guide. This figure is a completed schematic of the pole installation. Customers who do not have a pole can install directly on the wall.

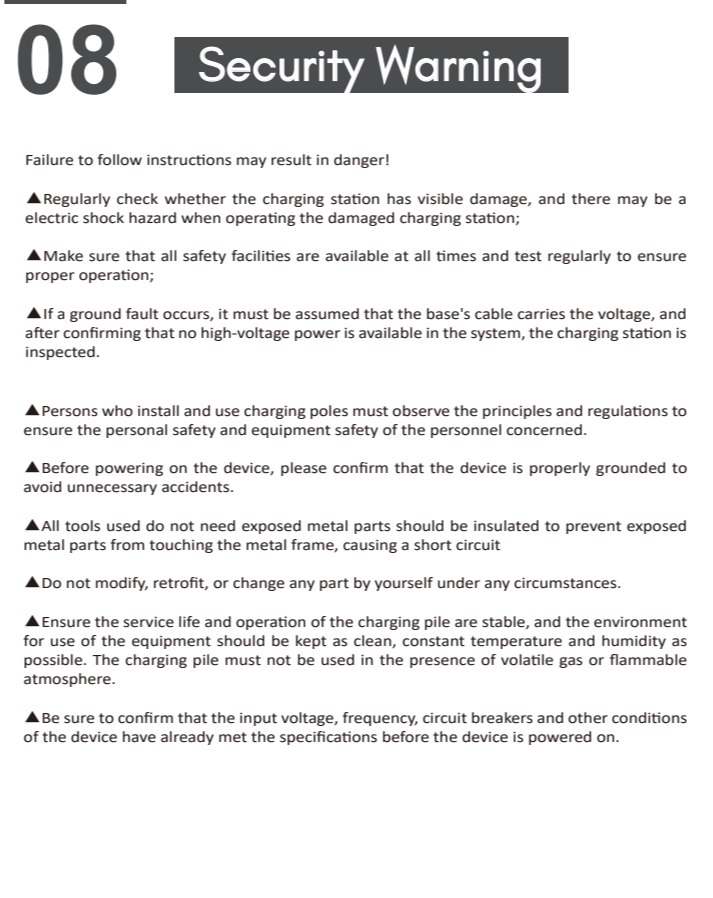
05 Instruction for Use



- Make sure the wallbox is connected with the power already;
- Connect the EV and the wallbox well with the EV charging cable;
- Press the button on the right side of the wallbox to start/stop the charging;
- Place the cable on the hook when not in use.

Note: Some other Modes contain RFID card or Key to start/stop instead of button.

06 Illustration of Screen



Note: When a simple problem like short current occurs, the wallbox will automatically restart the repair and continue charging.

07 Caution of Using

- Failure to follow instructions may result in danger;
- Please use the charging stand only if it is in accordance with the normal operation of the technology and safe operation;
- Children are prohibited from touching charging station;
- Install a charging station away from pyrotechnics, dust and corrosive occasions;
- The output of the charging station is high pressure, and you must pay attention to personal safety when using it;
- If the charging station has faults, there is a danger of electric shock and even death. Under emergency situations, you can cut off the power supply;
- Do not disassemble the charging station during the use.

About Maintenance

In order to ensure the normal service life of the charging station and reduce the use risk, maintenance must be performed within the specified time, the maintenance of the equipment needs to be completed by professionals, and the use of qualified and safe maintenance tools.

The product is already packed in the factory and during transportation, strong impact and bumps should be avoided to avoid damage to the outer packaging of the product. The product should be placed at an ambient temperature of 40°C-60°C and relative humidity of no more than 95%. The ambient air should not contain acids, alkalis or other corrosive gases and explosive gases, and it should be protected from rain, snow, wind and sand.

08 Security Warning

- Failure to follow instructions may result in danger!
- ▲ Regularly check whether the charging station has visible damage, and there may be a electric shock hazard when operating the damaged charging station;
 - ▲ Make sure that all safety facilities are available at all times and test regularly to ensure proper operation;
 - ▲ If a ground fault occurs, it must be assumed that the base's cable carries the voltage, and after confirming that no high-voltage power is available in the system, the charging station is inspected;
 - ▲ Persons who install and use charging piles must observe the principles and regulations to ensure the personal safety and equipment safety of the personnel concerned;
 - ▲ Before powering on the device, please confirm that the device is properly grounded to avoid unnecessary accidents;
 - ▲ All tools used do not need exposed metal parts that should be insulated to prevent exposed metal parts from touching the metal frame, causing a short circuit;
 - ▲ Do not modify, retrofit, or change any part by yourself under any circumstances;
 - ▲ Before the service life and operation of the charging pile are stable, and the environment for use of the equipment should be kept as clean, constant temperature and humidity as possible. The charging pile must not be used in the presence of volatile gas or flammable atmosphere;
 - ▲ Be sure to confirm that the input voltage, frequency, circuit breakers and other conditions of the device have already met the specifications before the device is powered on.

09 Overhaul

AC charging stations are subject to stringent quality inspections. From the day of purchase, any quality problems caused by using the equipment correctly within a year can be reflected to the dealer for the after-sales service.

Any incorrectness to handle, install, misuse, repair or neglect caused by the user's own negligence or any natural damage resulting in direct damage and failure to the product cannot be covered by the warranty.

This quality guarantee is only for original buyers.

